

Subsidiaries

ARGENTINA
SDMO ARGENTINA S.A.
TÉL./ FAX +54 114 836 3511

BELGIUM
SDMO NV/SA
TEL. +32 3 646 04 15 - FAX +32 3 646 06 25

BRAZIL
SDMO DO BRAZIL
TEL/FAX +55(11)4390 8434

SPAIN
SDMO INDUSTRIES IBERICA
TEL. +34 902 305 656 - FAX +34 935 803 136

UNITED STATES
SDMO GENERATING SETS
TEL. +1 305 863 00 12 - FAX +1 305 863 97 81

UNITED KINGDOM
SDMO ENERGY LTD
TEL. +44(0) 1932 345 777 - FAX +44(0) 1932 350 033

NIGERIA
SDMO LAGOS
TEL +234 (0) 177 695 95 - FAX + 33 (0)172 275 562

Offices

SOUTH AFRICA
SDMO JOHANNESBURG
TEL. + 33 (0) 6 31 59 47 01 - FAX + 33 (0)1.72.27.61.51

ALGERIA
SDMO ALGER
TEL. +213 21 68 12 12 - FAX +213 21 68 14 14

DUBAI
SDMO MIDDLE EAST
TEL. + 971 50 294 96 94 - FAX +33 1 722 755 75

RUSSIA
SDMO MOSCOW
TEL. + 7 926 838 05 34 - FAX +33 (0) 1 72 27 55 48



SDMO Industries - 12 bis rue de la villeneuve
CS 92 848 - 29 228 Brest Cedex 2 - France
Tél. +33 (0)2 98 41 41 41 - Fax +33 (0)2 98 41 63 07
www.sdmo.com

SDMO®



MIGS NEXYS

ENGLISH

NEX/GB-2007/1



Global Power Solution™

ISO 9001



SDMO Industries
Implantation en France

4916-07.07.L Cj.com 02 43 52 12 00 - www.cj.com.fr Crédit photo : SDMO - Guillaume Team

PRÉSENTATION

MICS NEXYS

The MICS NEXYS is SDMO's entry level control panel, proposed as standard on our 7.5 to 275 kVA generator sets. Fitted with a polycarbonate front panel and an LCD screen, it has a user-friendly design and offers high quality features for simple and reliable control of your generator set. The MICS Nexys enables to operate both in manual or automatic mode.



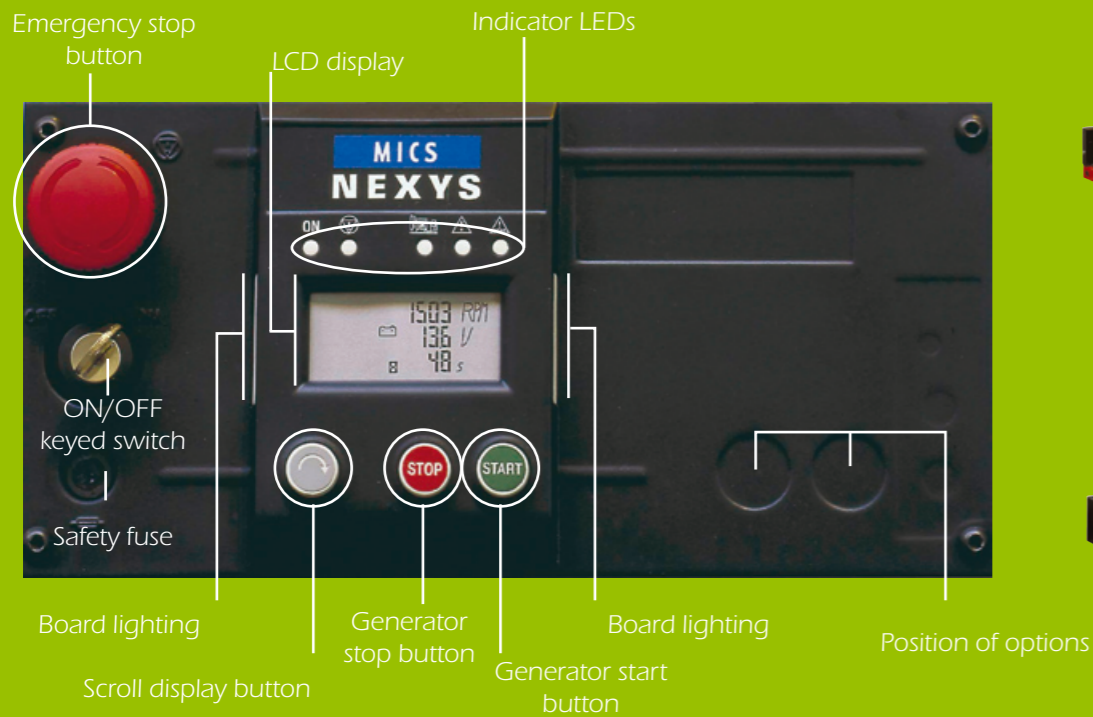
Console for generator sets up to 80 kVA



Console for generator sets up to 150 kVA

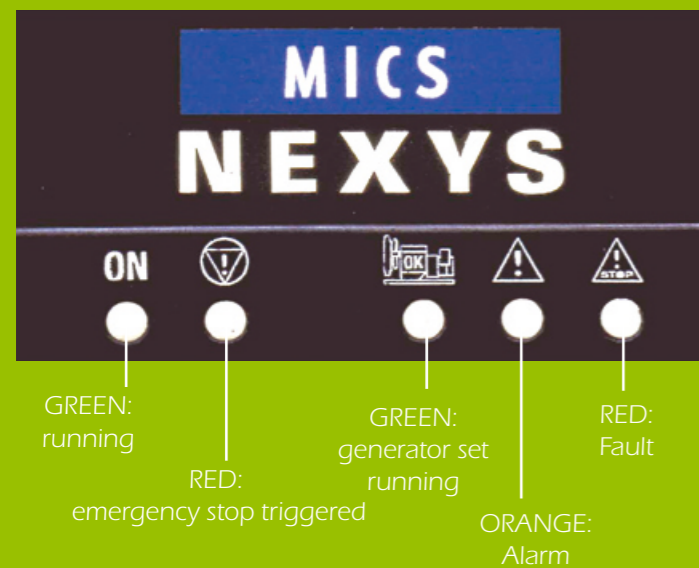


Console for generator sets up to 275 kVA

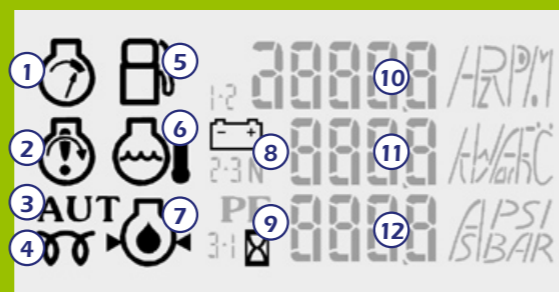


PROTECTION AND OPERATION

Operation, alarm and fault LEDs



Operating, alarm and fault pictograms

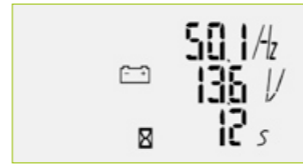


Operation	Alarms and faults
3+9 AUTO mode	1 Overspeed
4+9 Air preheating	2 No start-up
5+10 Fuel level	5 Low fuel level
6+11 Water temperature	6 Water temperature
7+12 Oil pressure	7 Oil pressure
8+11 Battery voltage	8 Charge generator

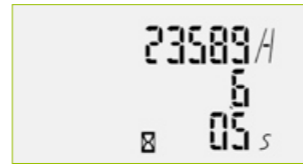
MEASUREMENTS

Standard LCD display

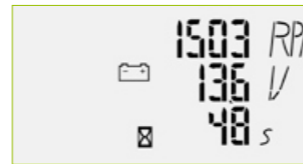
Frequency (Hz)
Battery voltage (V)
Delay⁽¹⁾(s)



Time meter
1st line: Hours
2nd line: tenths of hours
Delay⁽¹⁾(s)

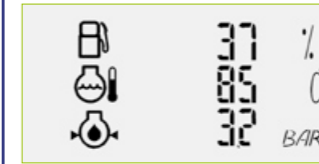


Generator set speed (tr/mn)
Battery voltage (V)
Delay⁽¹⁾(s)

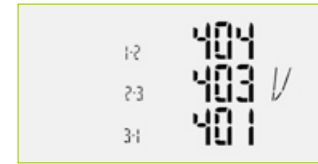


Option LCD display

Fuel level (%)
Water temperature (°C)
Oil pressure (Bar)
EU Units



Phase-to-phase voltages (V)



Fuel level (%)
Water temperature (°F)
Oil pressure (PSI)
US Units

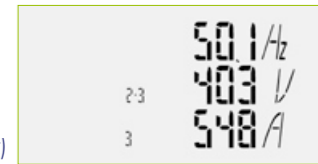
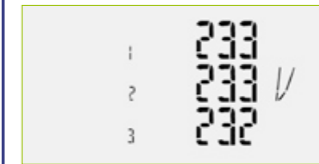


Amperages (A)



Phase voltages (V)

Fréquence (Hz)
Voltage (V)
Amperage (A)



(1) Préchauffage air, tentative de redémarrage, micro-coupure, retour secteur

OPTIONS

- CM301** Availability for automatic start-up on external order
- CM302** Automatic pack : battery charge + relays and 220/240 V motor preheating resistor (in combination with CM301)
- CM303** «Measurements» board (U, V, I)
- CM304** Adjustable mains detector in cabinet
- CM305** Remote control pack : generator running, general fault, alarm or low fuel level fault
- CM307** On-screen display of analogue variables (OP, WT)
- CM308** Remote control with box
- CM310** Voltage adjustment potentiometer
- CM311** Speed adjustment potentiometer
- CM312** Audible alarm fitted in the cabinet
- CM315** Low water level safety device
- CM316** Low gas oil level safety device
- CM318/CM319** Fixed differential protection
- CM320** Time and threshold adjustable differential protection
- CM324** Central processing unit with neutral
- CM325** Central processing unit without neutral

OPERATION

The MICS NEXYS can also be switched to automatic mode by connecting to a **NBI** (Normal Backup Inverter).

The **TSI** module (Transfer Switch Intelligence), fitted as standard to our complete NBI range, is an innovative and original tool.

Intuitive and easy to use, it self-configures automatically as soon as network-side voltage is present.

Electronic power source switching allows it to self-power itself.

WITH NBI



Transfer Switch Intelligence
Thanks to a wired link, it allows a remote dry contact start up on the MICS NEXYS

