

Subsidiaries

ARGENTINA

SDMO ARGENTINA S.A.

TEL. +54 11 48363511 - FAX +54 11 48363516

BELGIUM

SDMO NV/SA

TEL. +32 3 646 04 15 - FAX +32 3 646 06 25

BRAZIL

SDMO DO BRAZIL

TEL. +55 (11)4390 8434 - FAX +55 (11)4390 8434

SPAIN

SDMO INDUSTRIES IBERICA

TEL. +34 902 30 56 56 - FAX +34 93 580 31 36

UNITED STATES

SDMO GENERATING SETS

TEL. +1 305 863 00 12 - FAX +1 305 863 97 81

UNITED KINGDOM

SDMO ENERGY LTD

TEL. +44 (0)1932 345 777 - FAX +44 (0)1932 350 033

NIGERIA

SDMO LAGOS

TEL. +234 (0)1 776 95 95 - FAX + 33 (0)1 72 27 55 62

Offices

ALGERIA

SDMO ALGER

TEL. +213 21 92 55 84 - FAX +213 21 92 47 76

DUBAI

SDMO MIDDLE EAST

TEL. + 971 50 294 96 94 - FAX +33 1 722 755 75



SDMO Industries - 12 bis rue de la villeneuve
CS 92 848 - 29 228 Brest Cedex 2 - France
Tel. +33 (0)2 98 41 41 41 - Fax +33 (0)2 98 41 63 07
www.sdmo.com

SDMO®

MICS TELYS

ENGLISH

TEL/GB-2007/1



Global Power
Solution™

ISO 9001



SDMO Industries
Implantation en France

NEW TELYS

Wholly developed by SDMO, the TELYS is fitted as standard, or as an option, to all our generating sets, to ensure efficient operation and surveillance of your installation. Streamlined and modernised, the new generation TELYS offers new functions in addition to those taken from the previous version. In its basic configuration, it is able to cover 80% of standard applications.

Its new design, directly inspired by the NEXYS, has a reduced number of buttons to offer you simplicity when operating your generating set. More than ever, SDMO has placed the emphasis on the user-friendliness of its product, the particular strength being communication (USB connections, PC connections, control software and remote operation).

SIMPLICITY

The straightforward TELYS interface ensures it is easy to use: a START button, STOP button, MENU button, ESCAPE button and 3 LEDs (operation, alarm and fault). The ridged control wheel makes this interface particularly easy to operate, as it allows you to scroll through the menus and make selections at a single touch. Pictograms ensure that all information given can be immediately understood.

USER-FRIENDLINESS

The TELYS has a large, backlit screen, the contrast for which does not need to be adjusted, making your installation a pleasure to use, whether inside or out, both day and night. The drop down menus and descriptions ensure that no further explanation is needed. The integrated maintenance tool⁽¹⁾ warns you of future servicing requirements and the fault finding aid guides you through any alarms or faults signalled by the TELYS.

MODULARITY

With the same format and design as the NEXYS, the TELYS can be easily fitted in place of the latter. To improve the control of your parameters and increase the potential of your installation, three cards can be connected to the TELYS (Inputs/Outputs, Speed/Voltage trimming⁽¹⁾, Synchronizing⁽²⁾). Certain aftermarket options can also be added to update the product and/or to personalise your generating sets.

COMMUNICATION

The generating set can be controlled and operating parameters viewed remotely, without having to install specific software, via a computer network, a landline telephone network or a mobile telephone network. The USB ports ensure that it is easy to recover any events connected to the operation of the generating sets, to change parameters or to update the software. Also, the TELYS is multilingual as standard and can also take some special languages as an option⁽¹⁾ (Arabic, Chinese, Russian)

(1) available from 2007 semester 1
(2) available from 2007 semester 2

GENERATION

PRESENTATION

The TELYS is fitted as standard, or as an option, to all SDMO generating sets in the POWER PRODUCTS and RENTAL POWER ranges.

Types of control unit	TELYS
POWER PRODUCTS	
PACIFIC range (T7.5 to T44)	○
MONTANA range (J33 to J300)	○
MONTANA range (J400 to J440)	■
ATLANTIC range (V200 to V220)	○
ATLANTIC range (> V220)	■
EXEL range	○
PACIFIC range (T1250 to T2100)	○
RENTAL POWER	
From 16 to 275 kVA	○
From 330 to 700 kVA	■

○ Option
■ Basic

COMPLIANCE WITH STANDARDS

The TELYS has been developed following a process which exacts the highest quality. It complies with all major European, American and International standards and directives:

- Electromagnetic Compatibility (EMC) general standards: EN 61000-6-2 and EN 61000-6-4 (emission and protection)
- LOW VOLTAGE standards
- Salt spray test performance: In accordance with standard EN68011-2-11
- Protection index of a TELYS mounted to a console: IP31 with the soft USB port protective cover fitted (according to EN 60529)
- UL and CSA standards

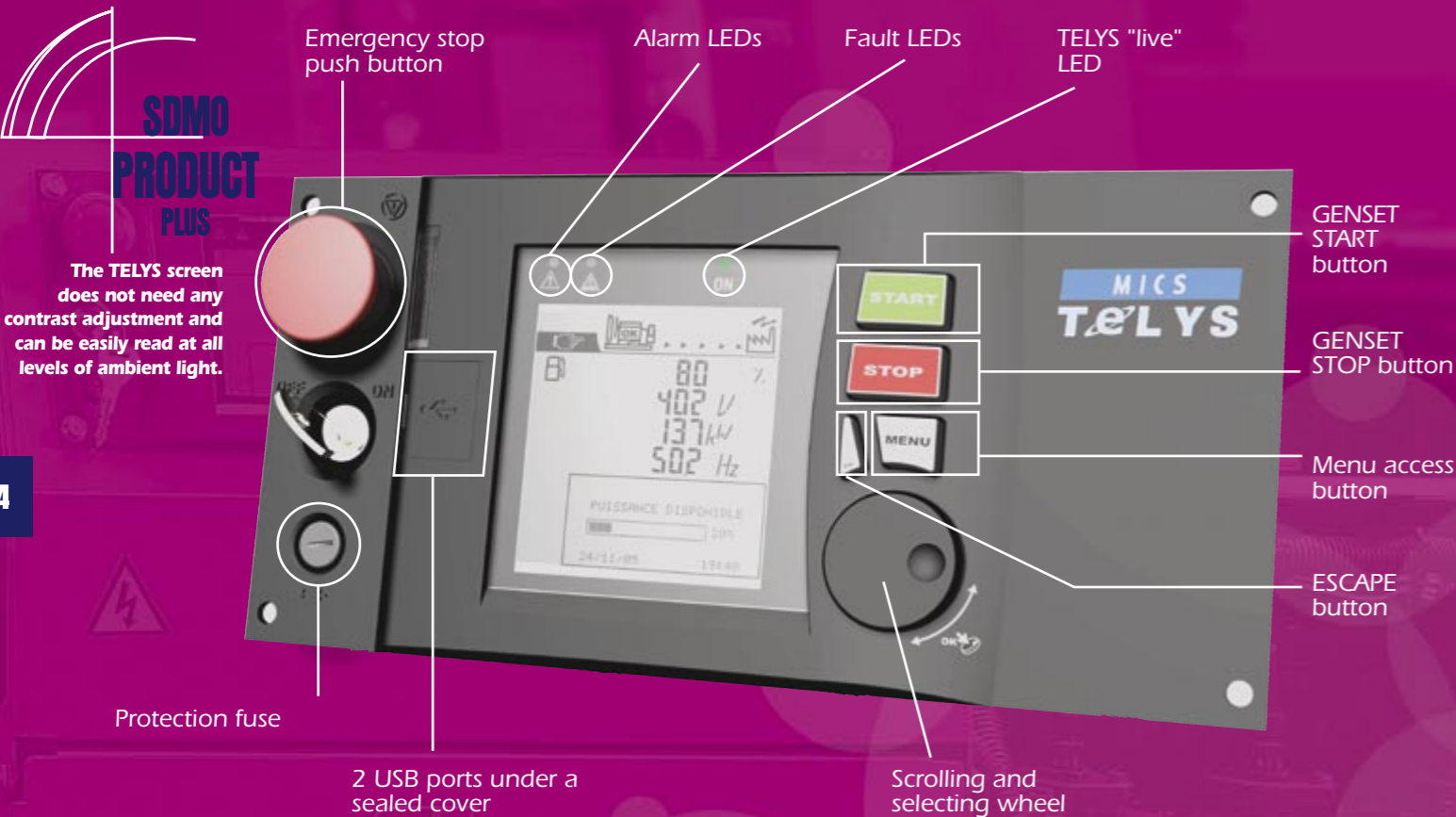
In addition, the TELYS does not fall under the remit of directives 2002/95/CE and 2002/96/CE, which relate to Electrical and Electronic Equipment (DEEE).



ATLANTIC generating set fitted with the TELYS

RENTAL POWER generating set fitted with the TELYS

PRESENTATION OF THE MMI (Man-Machine Interface)



4

ZOOM INTO ...

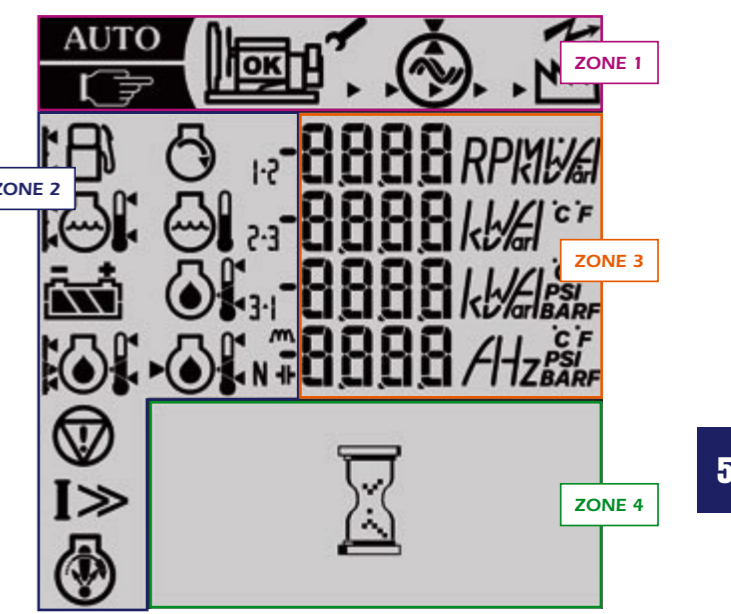
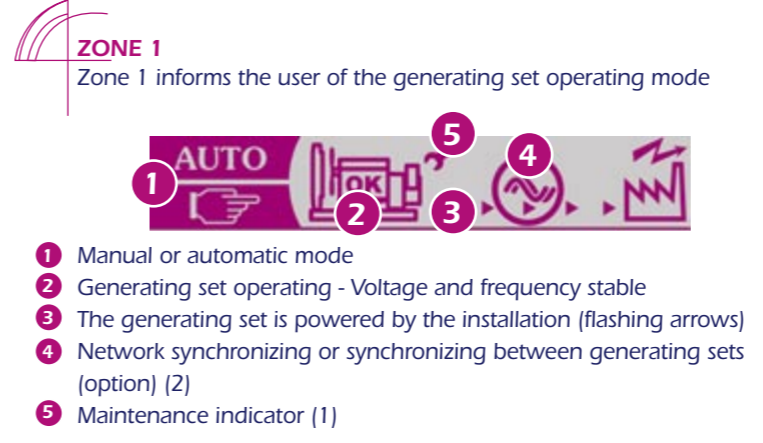


DISPLAY SCREEN

TELYS SCREEN

PRESENTATION

The large personalised TELYS screen, makes different information easy to read (pictograms, measurements and messages). Its backlit design gives it a contrast which is adapted to all types of ambient light. The section with graphics is split into four zones.



5

EXAMPLE OF SCREEN, GENSET STOPPED

AUTO	Genset in automatic mode, stopped
B 80 %	Fuel level indicator
11 °C	Coolant temperature indicator (units according to settings menu)
252 V	Battery voltage indicator
12 °C	Oil temperature indicator (units according to settings menu)
OPERATION AUTO WARNING: START UP POSSIBLE IMMEDIATELY	Warning message

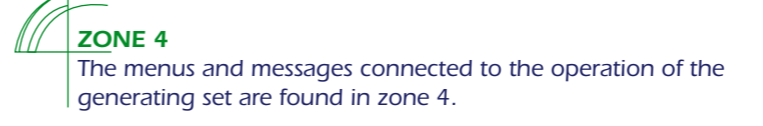
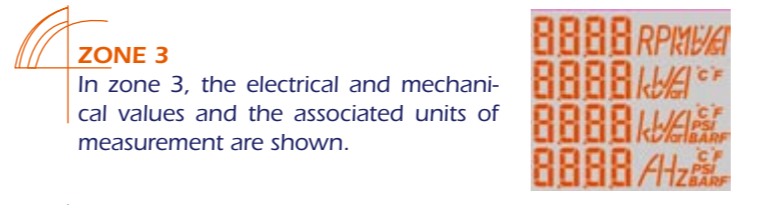
EXAMPLES OF SCREEN, GENSET RUNNING

AUTO	Genset in automatic mode, starting in progress
600 RPM	Engine Speed indicator
48 °C	HT coolant temperature indicator (units according to settings menu)
17 bar	Oil pressure indicator (units according to settings menu)
43 °C	Oil temperature indicator (units according to settings menu)
STARTING IN PROGRESS	Information message

AUTO	Genset in automatic mode, powered by the installation
B 80 %	Fuel level indicator
402 V	Voltage supplied indicator
226 kW	Indicator of active power active drawn from the installation
502 Hz	Current frequency indicator
AVAILABLE POWER	Bar graph of available power

AUTO	Genset in manual mode
12 404 V	Indicator of phase to phase voltage between phases
23 403 V	Indicator of phase to phase voltage between phases
31 502 Hz	Current frequency indicator
ALARM	Warning message

- 1 Fuel Level
- 2 Coolant temperature and level
- 3 Battery voltage and charge
- 4 Oil pressure, temperature and level
- 5 Emergency stop
- 6 Overload
- 7 Failure to start, underspeed and overspeed
- 8 Engine speed



(1) available from 2007 semester 1
(2) available from 2007 semester 2

MAIN BOARD

MICS TELYS

The standard version of the TELYS consists of a main board and an MMI. This board is available in two versions, to ensure that all types of engines (electronic, traditional or mixed engines) can be managed



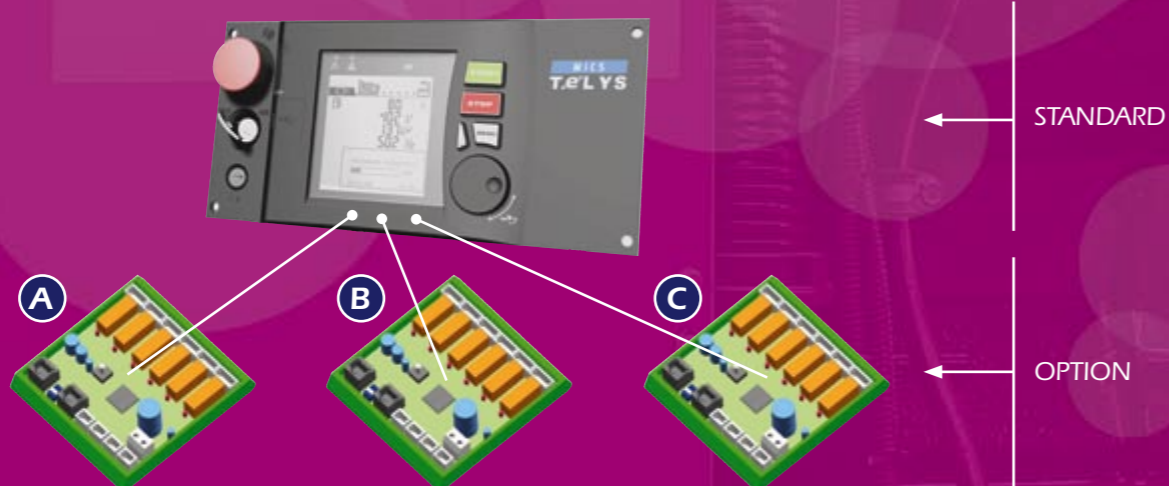
For external communication, the customer connection area is marked in white and offers 3 connection possibilities, for controlling and displaying parameters and remote operation.

- ① RS 485 PORT - For specialised communication
- ② ETHERNET PORT ⁽¹⁾ - For connection to a modem or for working on the intranet
- ③ USB HOST PORT - For connecting a USB key

OPTIONAL CARDS

MICS TELYS

As an option, the TELYS can be connected to up to 3 types of card:



- A 1 Input/output card** - The input/output module enables additional logical inputs and outputs to be provided, as a supplement to those already available on the main board. . Inputs can be used for additional alarms or faults and outputs can be used for data transfers or to control options.
The input/output module is composed of 4 inputs and 6 outputs. A green LED is used to check the status of each output.
- B 1 card for speed and voltage trimming ⁽¹⁾** - This card enables the engine speed and voltage supplied by the generating set to be adjusted.
- C 1 coupling card ⁽²⁾ (1 for each generating set)** - The coupling card enables two types of configuration:
 - coupling between generating sets (without grid)
 - temporary coupling of a generating set to a grid

(1) available from 2007 semester 1
(2) available from 2007 semester 2

STANDARD SPECIFICATIONS

MICS TELYS

ELECTRICAL MEASUREMENTS

Single voltages
Composite voltages
Frequency
Active/reactive/apparent power
Power factor
Total and partial counter
Total and partial active/reactive energy meter
Currents

ENGINE MEASUREMENTS

Fuel level (%)
Oil pressure (Bar/Psi)
Coolant temperature (°C/°F)
Oil temperature (°C/°F)
Battery voltage:
Charging alternator current
Engine speed

SAFETY FEATURES

Min/Max Alternator voltage
Min/Max Alternator frequency
Min/Max Battery voltage
Overload and/or short circuit
Active/reactive power return
Oil pressure
Coolant temperature
Overspeed
Underspeed

MAIN OPTIONS

CM402	Prewiring for auto start-up
CM403	Automatic Pack (Charger (12v)+ Engine preheating 220/240 v (Relay + resistance)
CM404	Automatic Pack (Charger (24v)+ Engine preheating 220/240 v (Relay + resistance)
CM405	Report pack (Genset running, General fault, Low diesel level fault or alarm)
CM406B	Adjustable mains detection in the control unit
CM407	Analog values displayed on screen (PH/TE)
CM408	Remote starter unit
CM409	Battery ammeter
CM410⁽¹⁾	Voltage trimming
CM411⁽¹⁾	Speed trimming (If elec regulator is possible and selected)
CM412	Sound alarm fitted in the control unit
CM415	Safety feature for low coolant level
CM416	Low fuel level safety feature for chassis tank (Alarm as standard)
CM418	Differential protection 30 or 300 mA (Non adjustable <= 50 A)
CM419	Differential protection 30 or 300 mA (Non adjustable <= 125 A)
CM420	Adjustable differential protection (time & threshold)
CM603	No preheating
CM604	Charger fault (24 V)
CM605⁽²⁾	EJP pack (Detection, warning management, forcing key)
CM607	Central processing unit with neutral (ITAN)
CM608	Central processing unit without neutral (ITSN)
CM610	NFPA110 module level 1
CM611	NFPA Visible transfer unit
CM613⁽²⁾	GES pack fitted on the genset
CM615⁽²⁾	Genset information transfer and inhibition unit
CM616	Low fuel level safety feature for separate tank
CM617	Low fuel level alarm for separate tank

INFORMATION REPORT

CE100	Fixed distance report pack (Genset running, General fault, Low fuel level fault or alarm)
CE220	Configurable distance report pack (6 report maximum)
CE221	Genset ON
CE222	Genset in automatic mode
CE223	Genset in non-automatic mode
CE224	Genset in manual mode
CE225	Genset in test mode
CE226	Genset stopped
CE22A	General fault
CE22B	Non-starting fault
CE22C	Oil pressure fault
CE22D	Water temperature fault
CE22E	Low water level fault
CE22F	Overspeed fault
CE22G	Alternator voltage fault
CE22I	Overload fault
CE22J	Emergency stop triggered fault
CE22K	Bulk tank fault (Separate tank)
CE22L	Differential triggered fault
CE22M	Fuel level low for exterior tank fault
CE22S	General alarm
CE22T	Low fuel level alarm
CE22U	Loss of coolant preheating alarm
CE22V	Min battery voltage alarm
CE22W	Battery charger fault alarm

EXTERNAL COMMUNICATION

CEA12⁽¹⁾	Remote control via local ETHERNET network or RS485 Mod Bus
CEA52	Remote control via PSTN fixed telephone network
CEA62	Remote control via GSM mobile telephone network



- 5 Basic languages: French, English, German, Spanish, Portuguese (Arabic, Chinese and Russian optional⁽¹⁾)
- Integrated software accessible via an internet browser, enabling certain parameters to be modified, TELYS data to be displayed, and the genset to be remotely controlled⁽¹⁾
- Integrated maintenance tool displaying future servicing requirements⁽¹⁾
- Integrated fault finding tool aiding the user in the event of any alarms and/or faults
- Ability to send e-mail, SMS or fax in the event of any alarms or faults (optional)⁽¹⁾
- Optional tropicalisation of the cards (to provide protection in extremely humid conditions)
- Operation at -20°C to +60°C
- Humidity: 95% at 45°C, 70% at 50°C, 50% at 60°C
- Different levels of access to the configuration parameters

(1) available from 2007 semester 1
(2) France only